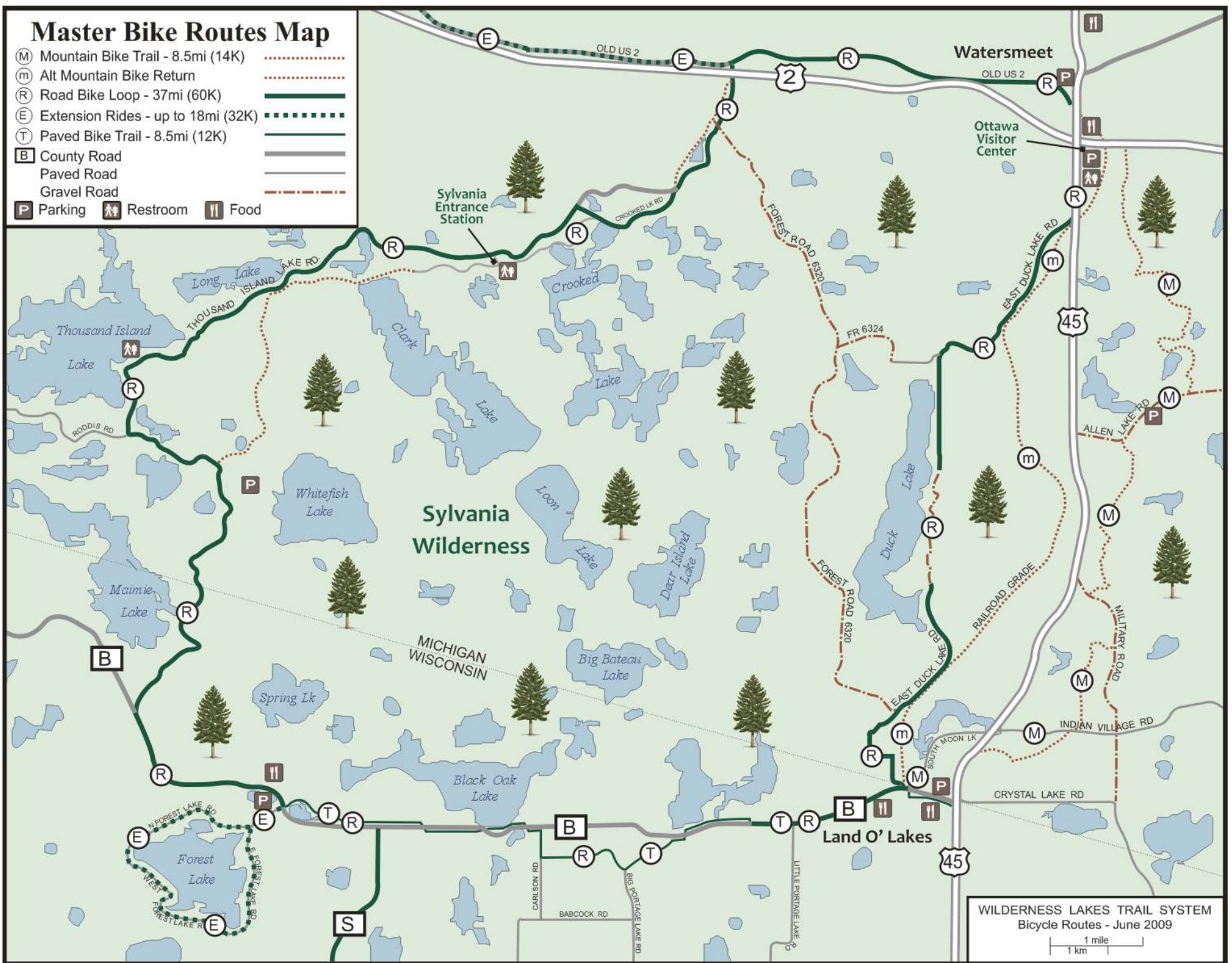


Master Bike Routes Map

- (M) Mountain Bike Trail - 8.5mi (14K) -----
- (m) Alt Mountain Bike Return -----
- (R) Road Bike Loop - 37mi (60K) —————
- (E) Extension Rides - up to 18mi (32K) -----
- (T) Paved Bike Trail - 8.5mi (12K) -----
- [B] County Road —————
- Paved Road —————
- Gravel Road -----
- [P] Parking ■ Restroom ■ Food ■



WILDERNESS LAKES TRAIL SYSTEM
Bicycle Routes - June 2009
1 mile
1 km